



6285 RANDOLPH STREET
CITY OF COMMERCE, CA 90040
(323) 726-8814 • FAX (323) 726-0338
www.airlouvers.com

MODEL 1100 A (SHOWN) 1100 C, 1100 CORE

Model 1100

Adjustable "Z" Blades

Manually-operated adjustable louver design for doors, transoms and partitions in schools, class "A" and institutional buildings.

Specifications

Standard Features:

Material: 16 gauge CRS frame and louver blades.

Construction: Mitered and welded corners; screws fastened through prepared frame into louver core; this mounting method leaves corridor side of frame free of fasteners for aesthetic and security purposes.

Equipped with interconnecting operating bar in jamb; operating handle on interior (occupancy) face unless otherwise specified.

Finish: Mineral bronze baked on powder coat.

Door: For 1 3/4" door.

Fasteners: #8 x 3/4" phillips head screws.

Free Flow Area: 45% free area.

Options:

Material: #20 gauge 304 stainless steel - #4 finish

Finish: Special order baked enamel colors
 Baked on powder coat gray prime for field painting, no extra charge.

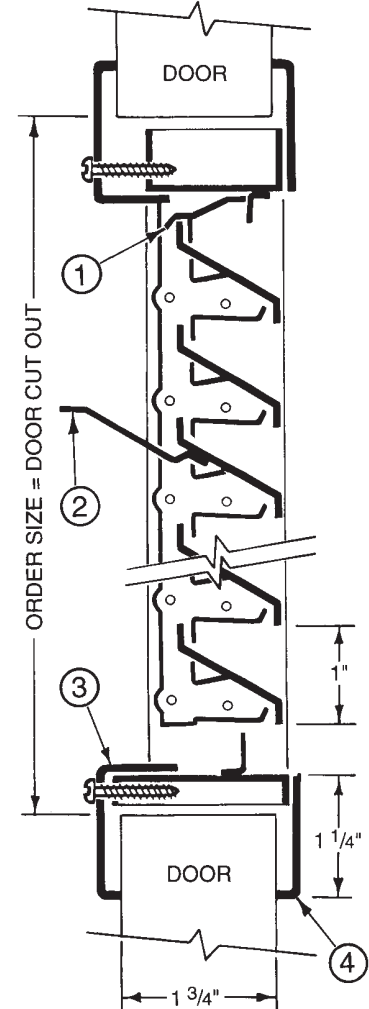
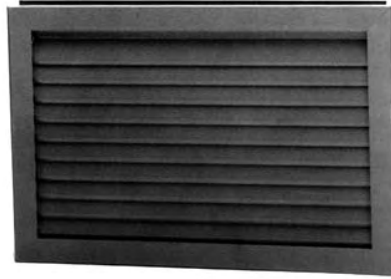
Fasteners: Security fasteners, please specify _____

Screens: 18-14 mesh insect screen installed in roll formed aluminum frame. Aluminum, bronze or fiberglass mesh available.

Door Thickness:

For 1 3/8" door.

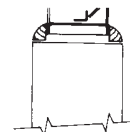
Size: _____ " wide x _____ " high _____ Quantity
(door cut out size equals order size).



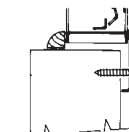
- ① INTEGRAL BLADE STOP HOLDS BLADES IN OPEN POSITION
- ② ADJUSTING TAB
- ③ ADJUSTABLE MOUNTING FLANGE FRAME
- ④ FIXED FACE FRAME

Model 1100A
Basic blade unit with flanged frame welded to face (corridor) side and separate flanged frame on opposite side; frame adjustable to fit any door thickness from 1-3/8" to 1-3/4".

Mounting Options:



Model 1100 Core
Basic blade unit only; for interior doors; or as transom louver held in place with wood or metal moulding (furnished by others).



Model 1100C
Basic blade unit with single flanged frame welded to face (corridor) side; for interior or exterior doors; wood or metal moulding (by others) used on opposite side.

Distributor: _____
Architect: _____
Contractor: _____

Project: _____
Location: _____
Date: _____